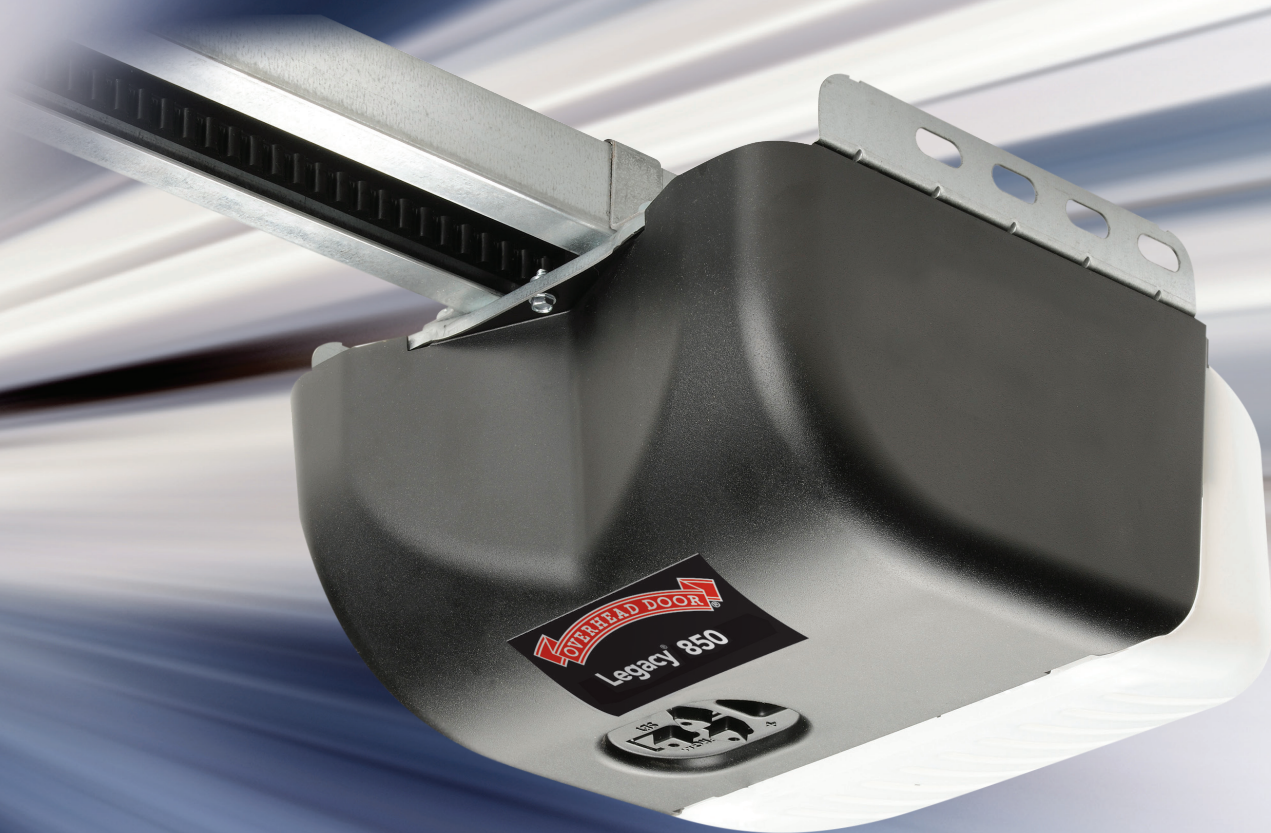


Model 2029/2029H

# *Legacy*<sup>®</sup> 850

## GARAGE DOOR OPENER



Power, reliability and convenience with  
a choice of belt or chain drive

**The Genuine. The Original.**



# Legacy<sup>®</sup> 850 Garage door opener with belt or chain

For use with residential sectional doors up to 8 ft. high and up to 500 lbs. in weight

- **Durable performance:** ½ HPC\* Power Plus motor operates most residential sectional doors weighing up to 500 lbs.
- **Quiet:** DC motor featuring soft start and stop combined with C-channel rail delivers quiet operation.
- **Design flexibility:** Choose from a belt or chain drive to suit your preference.

2029/2029H



\* Designates that it exceeds Overhead Door's lifting force specification for 1/2 horsepower garage door openers.  
\*\* Limited, non-transferable warranty. See owner's manual for details.

## Standard features

### DC motor technology

DC motor operates with variable speeds for soft start and stop; providing smooth, quiet operation and less wear and tear on your garage door.



### CodeDodger<sup>®</sup> access security system

Each time the remote control is activated, a new access code is selected from 4.3 billion possible combinations to prevent piracy of the radio signal that opens your door.



### Easy programming

Quick, effortless limit setting for faster installation.

### Auto seek dual frequency range

The opener listens for both the 315 or 390 MHz frequency emitted by the remote or wireless keypad, allowing reliable operation even in areas with frequency interference.



### Self-diagnostic Safe-T-Beam<sup>®</sup> System

When objects pass through the infrared beam, the door automatically stops closing and then reverses.



### C-channel rail

Operator rail designed for strength; conceals rotating belt or chain for safety and better aesthetics.



### Light system

Illuminate your garage with built-in lighting positioned toward inside of garage. Compatible with most CFL and LED light bulbs.



### Compatible with both HomeLink<sup>®</sup> and Car2U<sup>®</sup> systems



## Convenience options

Enjoy your new Overhead Door<sup>®</sup> garage door opener to the fullest with optional accessories. These accessories work with openers that feature our CodeDodger<sup>®</sup> access security system.

### Digital wireless keypad

Lighted keypad features a flip up cover and lets you control up to three garage door openers. Flip up cover is available in four colors, ensuring you can find the one that best complements your home.



White  
37227R



Gray  
37227S



Tan  
37227T



Almond  
37227U



37225R

### Master Remote

This sleek and compact 3-button remote is compatible with all Overhead Door<sup>®</sup> garage door openers manufactured from 1993 to the present. This remote features auto seek dual frequency as well as large buttons, LED lights and a convenient visor clip.



37345R

### 6' power cord

When you need a few extra feet of power cord; we have a model with a 6' power cord rather than the standard 4' cord (Model 2029H).

## Distributor services

### Installation

Selection of an Overhead Door garage door system includes expert installation and service from our professional network of over 400 distributors.

### Routine maintenance

Let your Overhead Door Distributor ensure that your garage door system operates at peak performance year-in and out. Ask about routine system tune-ups and other professional services offered.

SOLD AND DISTRIBUTED BY:



The Genuine. The Original.



2501 S. State Hwy. 121 Bus., Suite 200, Lewisville, TX 75067  
1-800-929-DOOR • sales@overheaddoor.com  
www.OverheadDoor.com

