



# SERVICE

MODELS

593

594



INDUSTRY LEADING  
COMMERCIAL & INDUSTRIAL SOLUTIONS

# Medium-Duty Thermacore® Insulated Steel Door System

MODELS 593/594



Installation and Service: Overhead Door Company of Twin Falls

## Standard Features At a Glance

Panel thickness	1 3/8" (35 mm)
R-value	12.76 (2.26 W/Msq)
U-value	.078 (.443 Msq/W)
Air infiltration:	
at 15 mph (24 kmph)	.08 cfm/ft <sup>2</sup> (1.46 m <sup>3</sup> /hr/m <sup>2</sup> )
at 25 mph (40 kmph)	.15 cfm/ft <sup>2</sup> (2.7 m <sup>3</sup> /hr/m <sup>2</sup> )
Thermal break	Hot melt
Exterior steel	593: .015" (.38 mm) galv. 594: .012" (.3 mm) galv.
Exterior surface	593: Ribbed, textured 594: Raised-panel, textured
Standard Springs	10,000 cycle
Std. maximum width	20'2" (6147 mm)
Std. maximum height	16'1" (4902 mm)
Exterior color	593: white, gray, tan, Industrial Brown, plus optional Kynar colors: white, brown, beige and Pep Boy gray 594: white, chestnut brown, almond, sandstone, hunter green, terra bronze, plus optional Kynar colors: white, brown and beige
Interior color	White
Limited warranty	10-year delamination 1-year door 3-year/20,000 cycle door and operator system (material and workmanship)

## Options

- Thermal glazing
- Aluminum sash section available
- High-usage components
- Wind load options
- Electric operator
- Chain hoist
- Posi-Tension® drums
- Safety bottom fixtures
- Bottom-sensing edge
- Flexible jamb, header seal
- Exhaust ports

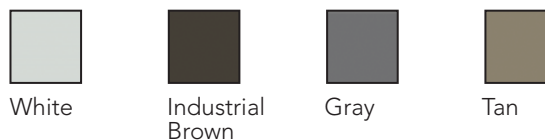
## Thermal Efficiency, Aesthetic Op

When your project requires a thermal door that is as energy efficient as it is attractive, the Thermacore® Models 593 and 594 are up to the task. These 1 3/8" (35 mm) thick doors provide high levels of thermal protection and are available in standard sizes up to 20'2" wide and 16'1" high (6147 mm wide and 4902 mm high). The Model 593 features a ribbed, textured surface, while the Model 594 offers a raised-panel, wood-grain textured exterior surface. Both are fabricated using Overhead Door Corporation's proprietary, computer-controlled manufacturing process. The result is an exceptionally well-built door that adheres to the strictest product tolerances and quality standards – for long-lasting performance and good looks.

### Strong, Lightweight, Attractive and Durable.

Thermacore® 593 and 594 doors feature roll-formed, hot-dipped galvanized steel exterior panels. Our 10-year warranty against delamination means that we'll stand behind the quality of our doors at the outset and for the long haul. Additional Kynar premium finish option with 20 year limited warranty available.

### Colors available on Model 593



### Colors available on Model 594

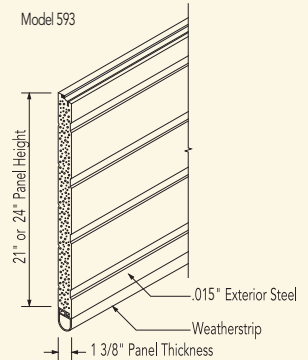


For drawings and specifications please visit our website, [www.OverheadDoor.com/architects corner](http://www.OverheadDoor.com/architects%20corner).

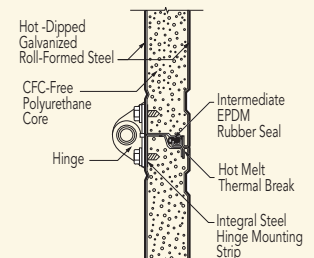




## Options, Long-Lasting Performance



Overhead Door Corporation's line of Thermacore® steel-polyurethane-steel sandwich panel construction is lightweight, incredibly strong and exceptionally efficient – reflecting a premium level of thermal performance.



594 shown in picture.

Installation and Service: Overhead Door Company of Glen Falls

ratings in the industry.

### Superior Field Serviceability.

The special internal construction of Thermacore® doors allow hinges to be placed anywhere along the panel's length permitting customization on the job site – for fast and precise installation, repair or retrofit.

### Highly Engineered for Higher Thermal Efficiency.

The Thermacore® product line's unique manufacturing process provides a CFC-free, fully encapsulated, foamed-in place panel which maintains R-value performance year round — and year in and year out. Thermal breaks and joint seals minimize air infiltration and provide one of the highest thermal efficiency

For additional information, or special project requirements, consult your Overhead Door Distributor or the Overhead Door Architectural Design Manual.

### Many Options, Better Solutions.

The Thermacore® 593 and 594 are available in sizes up to 20'2" (6147 mm) wide and 16'1" (4902 mm) high. A full line of electric operators ensure precise and trouble-free motor operation in a variety of mounting options (side, center or trolley). Available options include aluminum sash sections up to 20'2" (6756 mm), thermal glazing, and jamb weatherstripping. Optional high-usage components expand the door versatility to high-cycle conditions, with torsion springs in 25k, 50k, 75k or 100k cycles, a solid-steel shaft to reduce fatigue and deflection, and a heavy-duty 3" (76 mm) steel track for added durability.

---

## The Original, Innovative Choice for Unequalled Quality and Service

---

Overhead Door Corporation pioneered the upward-acting door industry, inventing the first upward-acting door in 1921 and the first electric door operator in 1926. Today, we continue to be the industry leader through the strength of our product innovation, superior craftsmanship and outstanding customer support, underscoring a legacy of quality, expertise and integrity. That's why design and construction professionals specify Overhead Door Corporation products more often than any other brand.

The Overhead Door Red Ribbon is a mark of quality that also reflects the pride we take in the people who support our products. Our family of over 400 Overhead Door Distributors across the country not only share our name and logo, but also our commitment to excellence. Your Overhead Door Distributor will work with you in a consultative role to ensure that product selections achieve your design and application requirements — in addition to offering expert installation, professional field service and ongoing maintenance. From project design and manufacturing to installation and service, the Overhead Door Red Ribbon is your guarantee of genuine quality and turnkey service excellence.

**Together with our distributors, we offer comprehensive technical information and resource materials to support your project, including:**

- Architectural Design Manual – a comprehensive guide to selecting, specifying and detailing all commercial and industrial Overhead Door products can be found at [www.OverheadDoor.com/ADM/base.html](http://www.OverheadDoor.com/ADM/base.html)
- Operation & Maintenance Manual – detailed product information, customized for your project, to ensure reliable, long-life door system operation
- Custom application and technical assistance through ordering plants' customer service and technical services respectively
- Visit our Architect's Corner at [www.OverheadDoor.com](http://www.OverheadDoor.com)



Advanced Rolling Steel Door  
RapidSlat®



Thermacore® Sectional Doors



Rolling & Side Folding  
Security Grilles & Closures



Rolling Service Doors



Commercial Operators

Today, Overhead Door Corporation – along with our Horton Automatics division, for automated pedestrian entrances – is recognized as the leading, single-source manufacturer of integrated door and operator systems for commercial, industrial and residential applications. With multiple manufacturing locations throughout the United States, a state-of-the-art TREQ (Testing, Reliability, Engineering, and Quality) Center for design and engineering, and a national network of authorized Overhead Door Distributors, our capabilities are leading-edge and our field service and technical support second to none. Built best and backed best, Overhead Door is the industry's leading choice for quality that shows and lasts.

**To talk with the Overhead Door Distributor nearest you, call 1-800-929-DOOR.**

### Overhead Door Corporation

2501 S. State Hwy. 121 Bus., Suite 200

Lewisville, Texas 75067

1-800-929-DOOR

[www.OverheadDoor.com](http://www.OverheadDoor.com)



INDUSTRY LEADING  
COMMERCIAL & INDUSTRIAL SOLUTIONS

The Overhead Door Corporation family of quality commercial and industrial products includes:



A part of Sanwa Holdings Corporation